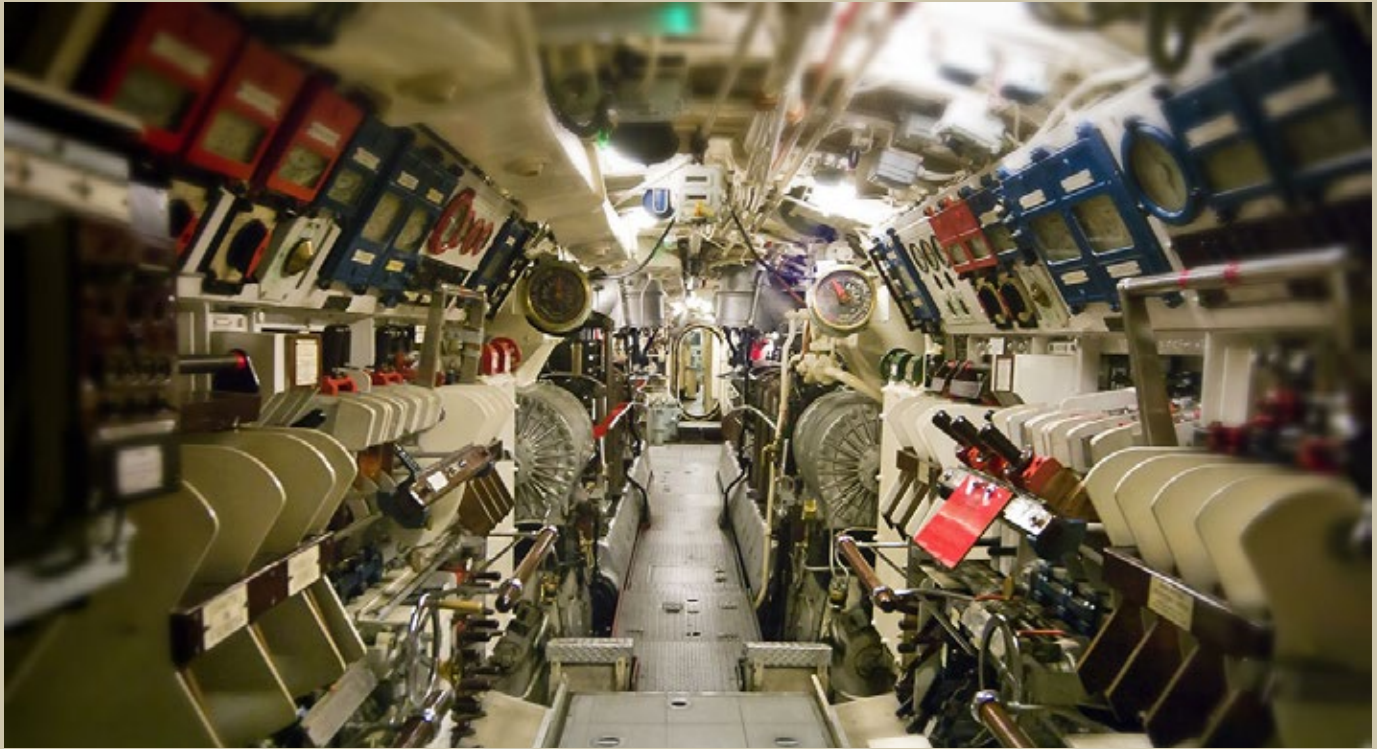


US Navy Qualified Helical Metal-Core Conduit for Above- and Below-Deck Shipboard Wire Routing Applications



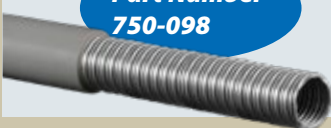
Improved sealing and shielding: the ultimate in highly flexible, crush-proof EMI/EMP wire protection

- Hermetically sealed, flexible metal-core conduit for shipboard wire interconnect applications
- UV-resistant "BlueJacket" jacketing over Brass, Stainless Steel, or Nickel Iron Alloy conduit
- Turnkey, factory-terminated assemblies for fast-turnaround dockside maintenance cycles
- All materials deliver superior EMC performance as well as crush resistance and environmental sealing compared to legacy systems

Glenair
SIGNATURE SERIES



Part Number
750-098



Select for superior crush resistance and corrosion protection

Highly flexible crush-proof metal conduit in stainless steel with Viton, Neoprene, or Bluejacket protective covering

Part Number
750-192



Select for low-frequency EMC protection in and around motors and control equipment

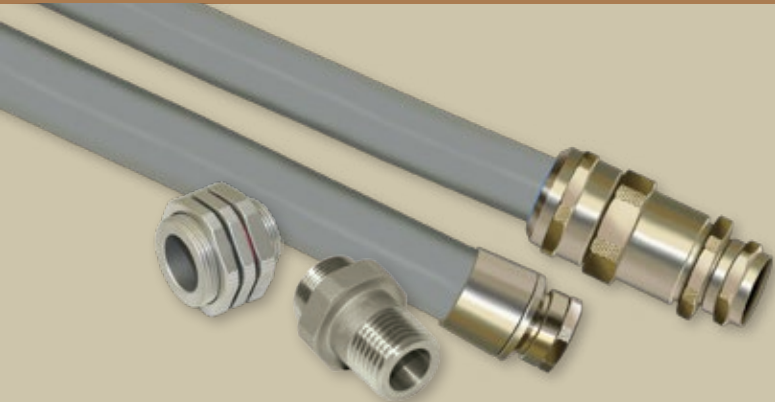
Nickel-iron conduit material plus shielding and jacketing

MIL-PRF-24758A NAVSEA-APPROVED

Metal-Core Conduit Wire Protection Systems

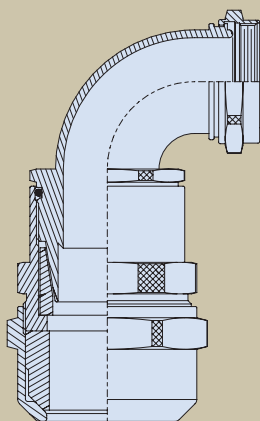


US Navy Qualified Brass, CRES, and Nickel-Iron, with Glenair Signature “BlueJacket” jacketing

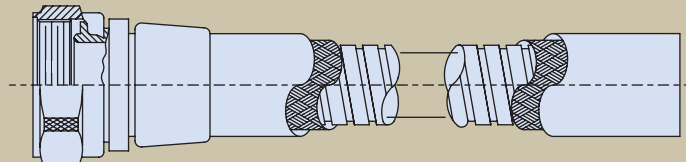


- Qualified to MIL-PRF-24758A(SH)
- User-installable and factory terminated configurations
- Innovative fitting design with advanced environmental sealing, EMI shield termination and rotatable coupling nut
- Adapters for all shipboard interfaces—fully compatible with legacy MIL-C-24758 conduit system components

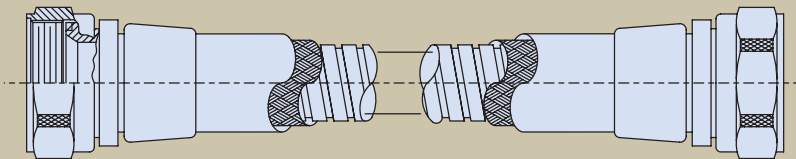
Do it once, do it right with Glenair Signature MIL-PRF-24758A wire protection conduit systems



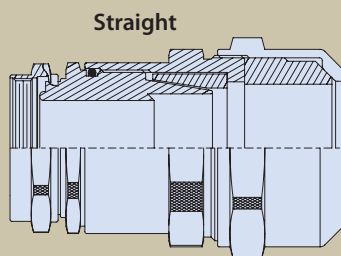
90°



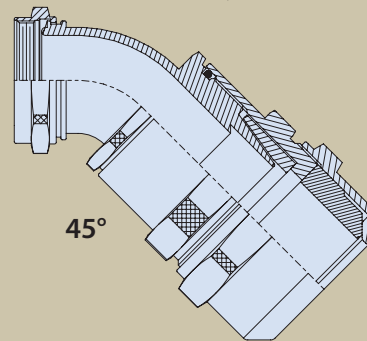
Single Ended Assembly



Double Ended Assembly



Straight



45°



MIL-PRF-24758A Configuration Options: Choose from high-performance user-installable fittings or lighter-weight factory terminated assemblies

FITTINGS AND ADAPTERS FOR USER-INSTALLED APPLICATIONS



Composite conduit splice fitting



Stainless steel conduit feed-thru fitting



Low-Profile RP Plus System



Heavy-duty environmental conduit-to-panel fitting



Heavy-duty environmental conduit-to-connector fitting

WIRE PROTECTION